



REGIONAL SPECIALISED METEOROLOGICAL CENTRE -TROPICAL CYCLONES, NEW DELHI TROPICAL WEATHER OUTLOOK

DEMS-RSMC TROPICAL CYCLONES NEW DELHI DATED 11.08.2025

TROPICAL WEATHER OUTLOOK FOR THE NORTH INDIAN OCEAN (THE BAY OF BENGAL AND THE ARABIAN SEA) VALID FOR THE NEXT 168 HOURS ISSUED AT 0600 UTC OF 11.08.2025 BASED ON 0300 UTC OF 11.08.2025.

BAY OF BENGAL:

A Low Pressure area is likely to form northwest & adjoining westcentral Bay of Bengal around 13th August, 2025.

Scattered to broken low and medium clouds with embedded intense to very intense convection lay over central & south Bay of Bengal, Andaman Sea, Gulf of Martaban and Tenasserim coast. Scattered low and medium clouds with embedded isolated weak to moderate convection lay over north Bay of Bengal.

***PROBABILITY OF CYCLOGENESIS (FORMATION OF DEPRESSION) DURING NEXT 168 HRS:**

24 HOURS	24-48 HOURS	48-72 HOURS	72-96 HOURS	96-120 HOURS	120-144 HOURS	144-168 HOURS
NIL	NIL	NIL	NIL	LOW	LOW	NIL

***NOTE: EVERY 24HR FORECAST IS VALID UPTO 0300 UTC (0830 IST) OF NEXT DAY**

ARABIAN SEA:

Yesterday's upper air cyclonic circulation over northeast Arabian Sea and adjoining Gujarat coast lay over Kutch & neighbourhood at 3.1 km above mean sea level at 0000 UTC and persisted over the same region at 0300 UTC of today, the 11th August, 2025.

Scattered low and medium clouds with embedded moderate to intense convection lay over southeast Arabian Sea, Lakshadweep Islands area and Comorin area. Scattered low and medium clouds with embedded weak to moderate convection lay over northeast & eastcentral Arabian Sea, Gulf of Kutch, Gulf of Cambay and southwest Arabian Sea.

***PROBABILITY OF CYCLOGENESIS (FORMATION OF DEPRESSION) DURING NEXT 168 HRS:**

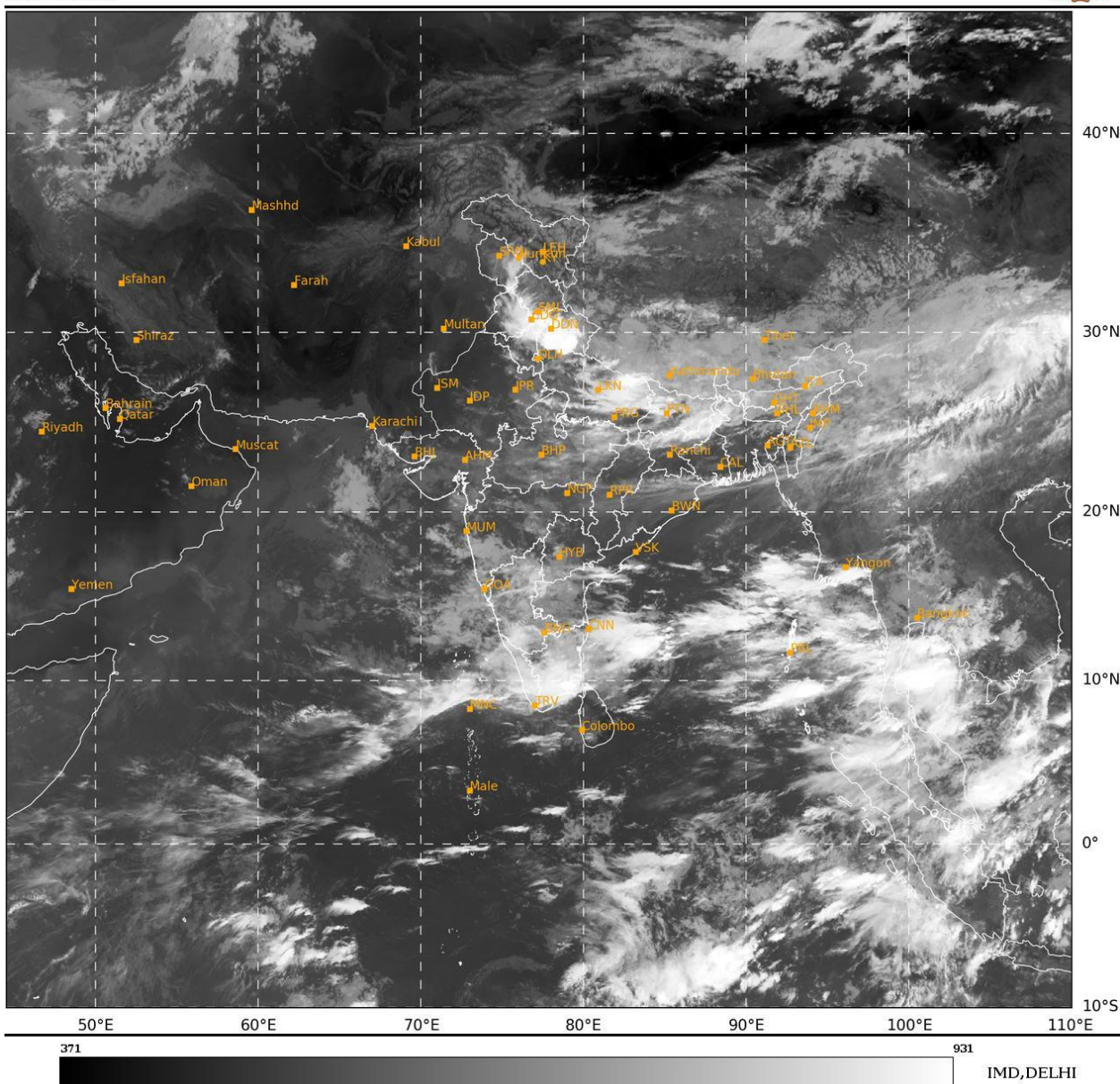
24 HOURS	24-48 HOURS	48-72 HOURS	72-96 HOURS	96-120 HOURS	120-144 HOURS	144-168 HOURS
NIL	NIL	NIL	NIL	NIL	NIL	NIL

***NOTE: EVERY 24HR FORECAST IS VALID UPTO 0300 UTC (0830 IST) OF NEXT DAY**

REMARKS: Cyclogenesis (formation of depression) during 15th-16th August is likely due to favourable phase of Madden Julian Oscillation (phase 3 & 4 with amplitude more than 1) and prevalence of westerly wind anomaly over south & central Bay of Bengal (BoB), easterly wind anomaly over north BoB and Equatorial Rossby Wave over BoB) during 13th-18th August. Most of the models are indicating the likely formation of a low pressure area over northwest & adjoining westcentral BoB during 13th-15th August. ECMWF is also indicating depression/well marked low pressure area around 15th/16th August. Hence low probability is assigned to cyclogenesis on day 5 & 6.

SAT : INSAT-3DR IMG
IMG_TIR1 10.8 um
L1C Mercator

11-08-2025/(0315 to 0342) GMT
11-08-2025/(0845 to 0912) IST



Cloud distribution: (a) Isolated: <25%, Scattered:25-50%, Broken: 51-75%, Solid:>75%, Convection Intensity: (a) Weak: Cloud Top Temperature(CTT)>-25°C,(b)Moderate:CTT:-25°Cto-40°C,(c)Intense:CTT: -41°Cto -70°Cand(d)Very Intense::Less than -70°C
PROBABILITYOFCYCLOGENESIS(FORMATIONOFDEPRESSION):NIL:0%,LOW:1-33%,MODERATE:34-66%ANDHIGH:67-100%
ThisisaguidanceBulletinforWMO/ESCAPPanelMembercountries.VisitrespectiveNationalwebsitesforCountryspecificBulletins